

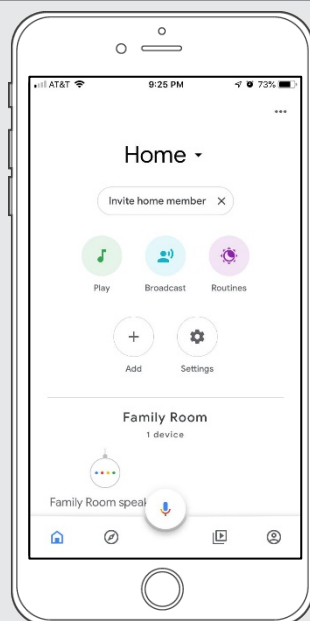
QUICK START GUIDE – GOOGLE HOME

STEP 1



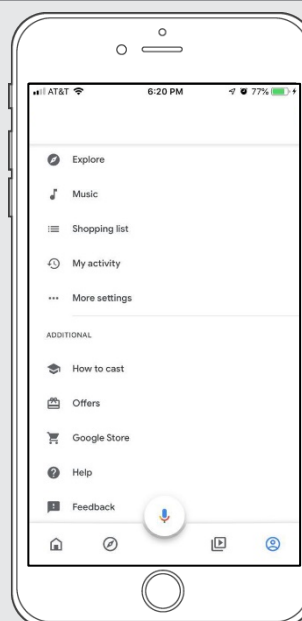
Open the "Google Home" mobile App.

STEP 2



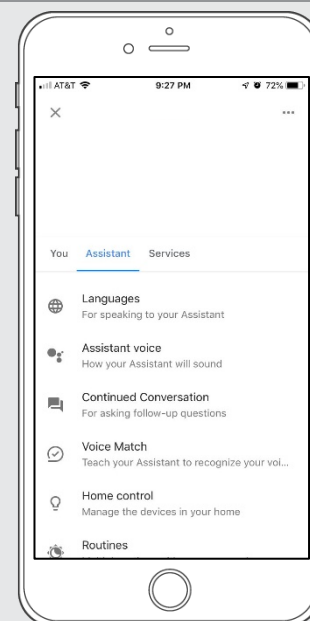
From the Home Screen, select "Icon" at the right corner on bottom of the page.

STEP 3



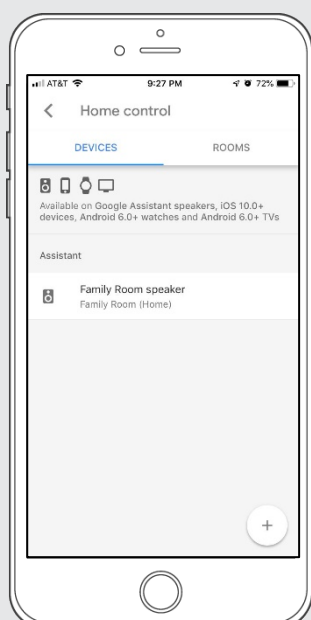
From that list, select "...More setting" to getting start the configuration of the Automate Pulse 2.

STEP 4



And then, select "Assistant" and click on "Home Control" to link the Automate Pulse 2 with your Google Home.

STEP 5



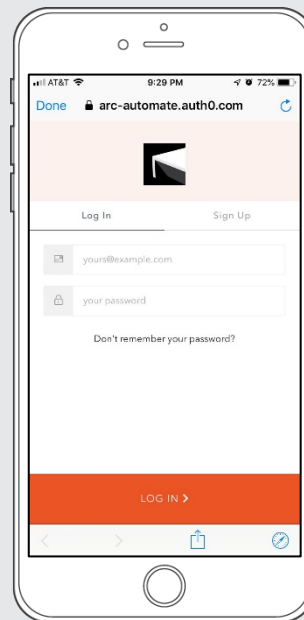
Press the "Plus" Button to link your Automate Pulse 2 with Google Home.

STEP 6



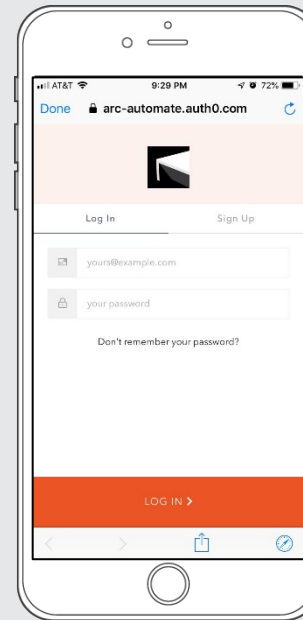
Type "Automate Pulse 2" on your on the Google Home Action.

STEP 7



Fill up the fields with the appropriate account information.

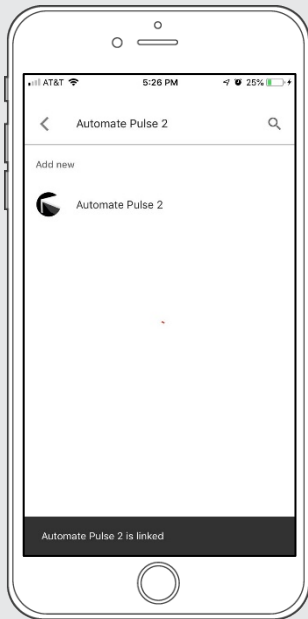
STEP 8



Click in Log in with your account information

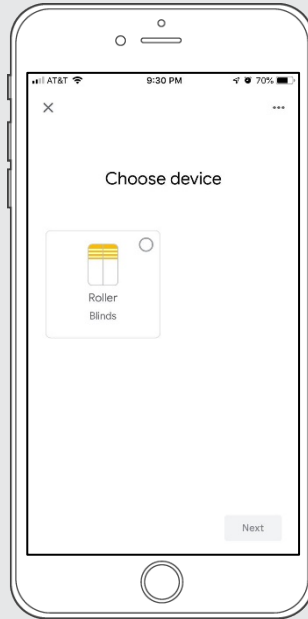
How to Operate the Shades

STEP 9



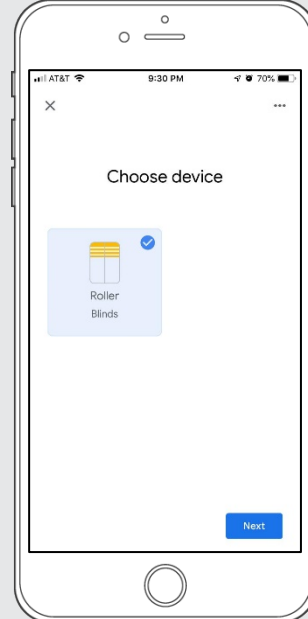
Now, your Automate Pulse 2 is linked with the Google Home.

STEP 10



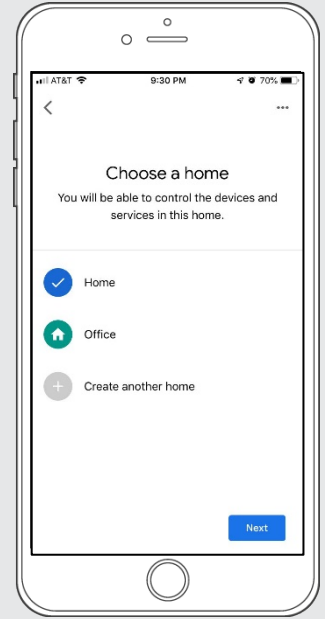
Automatically, the Google Home App will discover all shades programmed in your Automate Pulse 2.

STEP 11



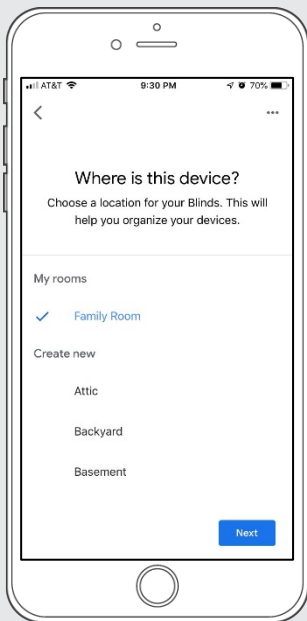
Select the desired shade that you want include in the Google Home.

STEP 12



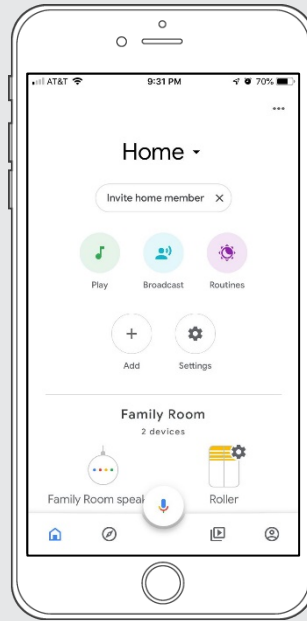
Select the appropriate Home for your shades.

STEP 13



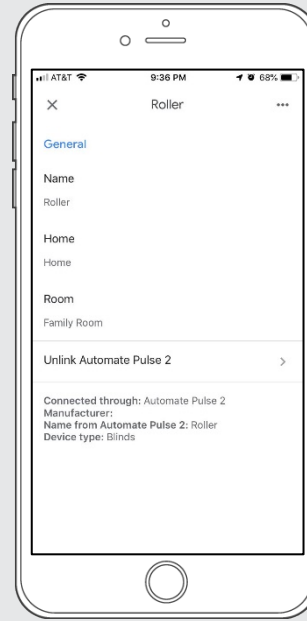
Choose the location that your Google is located .

STEP 14



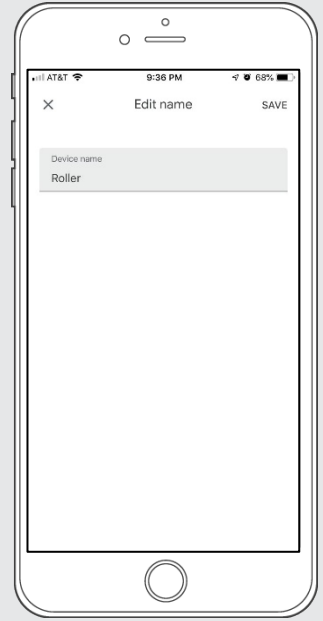
Click on the shade to customize the information into the Google Home App.

STEP 15



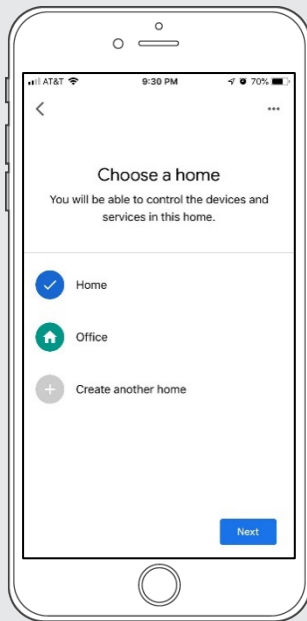
If desired, change the shade information into the Google Home App accordingly to you needed

STEP 16



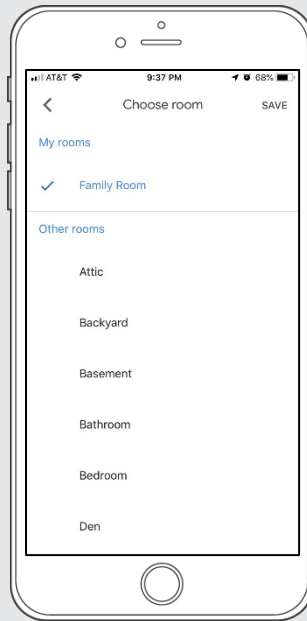
Click in the Name, if you want change the Shade Name on the Google Home.

STEP 17



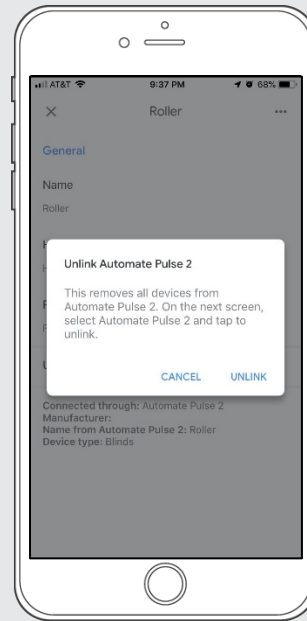
If is desired, change the Home location for your shades.

STEP 18



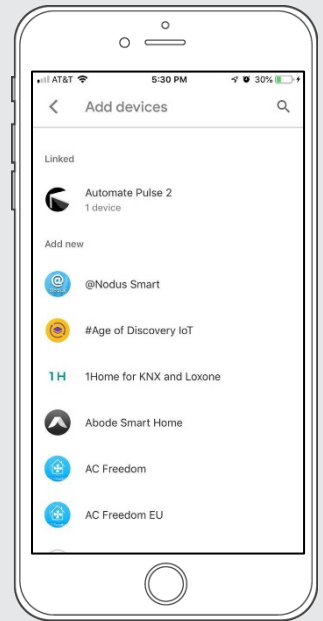
Select a new location that your Google Home is associated.

STEP 19



If is desired, unlinked the Automate Pulse from your Google Home App.

STEP 20



Check if the device is linked with the Automate Pulse 2.

How to Control your Shades using “Google Home”

The Google Home App allows you use the Voice control through your iPhone, iPad, iWatch or any Android device.

You just need to Say, "Hey Google" and followed by ...

Close <blinds name>
Close <room name> blinds
Close <blinds nick name>
Set <blinds names> to <percentage>
Close <blinds name> <adverb>
Close <blinds name> <direction>
Close blinds halfway
Open blinds halfway
Open <blinds name>
Open <Room Name> Blinds
Open <blinds nick name>
Open <blinds names> to <percentage>
Open <blinds name> <adverb>
Open <blinds name> <direction>
Set <blinds name> <percentage>
Are <blinds name> open?
Rotate <blinds name> to <degrees>
Rotate <blinds name> to <percentage>
Rotate <blinds name> <degrees> clockwise
Rotate <blinds name> <degrees> counterclockwise

